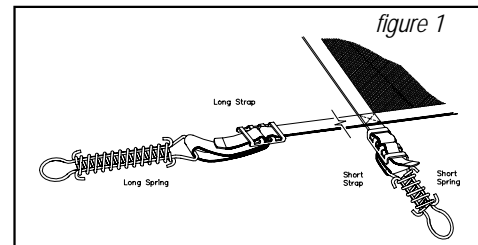


Installing Your LOOP-LOC On-Ground

STEP 1 UNFOLD YOUR COVER and place it **face up** in a large open area. (Green label will be showing)

STEP 2 ATTACH SPRINGS TO STRAPS. Lace cover straps around the squared-off end of springs using the method illustrated in *Figure 1*. You may have a combination of both long (7") and short (5") stainless steel springs. Attach long springs to each long strap and short springs to all other straps (if applicable). If your pool does not have an extended patio area on one side, only one size spring (and strap) is provided. Attach one spring to each strap in these instances.

IMPORTANT: For short straps (approximately 20" long), position buckle **all the way up** to the cover. For long straps (approximately 8' long), position buckle **5 feet 10 inches** away from cover.



STEP 3 PROPERLY LAY COVER OVER POOL.

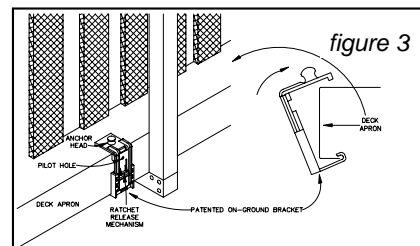
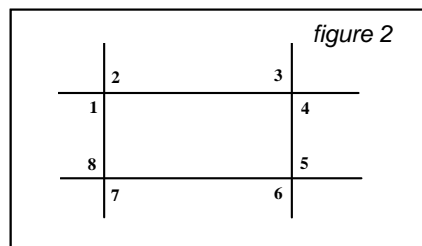
NOTE: If your pool has an extended patio deck on one side, be sure to position the long straps on your cover on the patio side of the pool. (Otherwise, all straps will be equal in length). **Measure** to adjust for equal cover overlap on all four sides and all 4 corners of pool.

Overlap is the portion of the cover that will lay on the deck, and will be approximately 10" to 11".

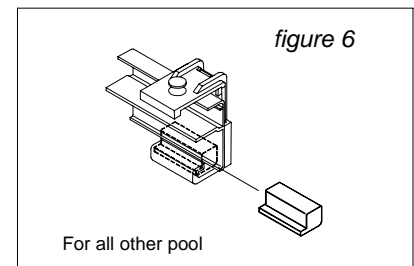
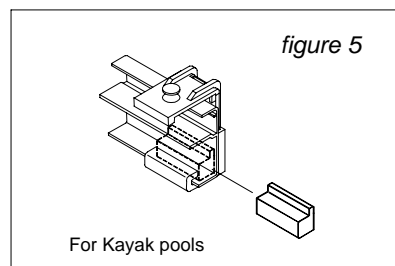
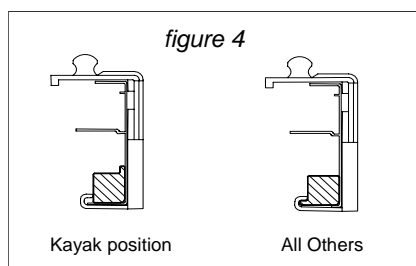
STEP 4 ATTACH / INSTALL BRACKETS TO POOL.

Attach / Install the 8 brackets at the 4 corners of the pool FIRST as pictured in *Figure 2*.

- Pull back on Strap #1 towards the edge of the deck being certain strap is straight. This is the bracket location. With a flat head screwdriver pry back the bracket's ratchet release mechanism only far enough to open the bracket to its maximum opening height. Install the bracket onto the deck apron **bottom first**, and rotate it as shown in *Figure 3*. With the bracket sitting flush against the deck, close the bracket as far as possible (bracket will ratchet down).
- Using a 1/8" drill bit, drill through the deck apron using the pilot hole in the bracket as a guide. Install a provided self-tapping stainless steel screw **by hand**, being careful not to over tighten, as this may cause the bracket to crack.
- Repeat this procedure for brackets located at points 2 through 8.



STEP 5 FOR ADJUSTABLE BRACKET ONLY, INSERT THE BLACK SPACER BLOCKS INTO THE BRACKETS (DOES NOT APPLY TO ONE PIECE METAL BRACKET.) ONCE THE BRACKETS ARE FASTENED TO THE DECK. **Please Note:** See *Figures 4, 5, and 6* for proper placement of the Spacer Blocks for Kayak On-Ground pools vs. all other brands. All Brackets **MUST** be used with the Spacer Blocks or the LOOP-LOC warranty will be void.

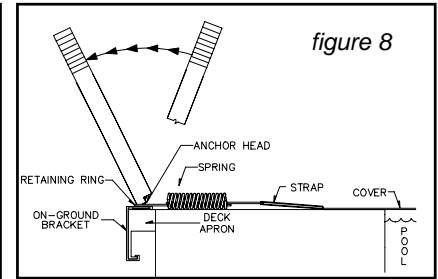
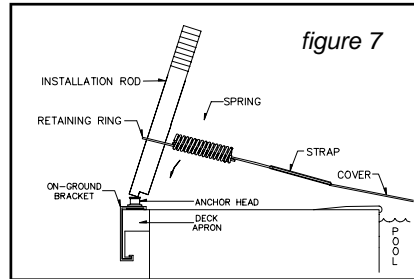


STEP 6 INSTALL SPRINGS ON THE 8 BRACKETS

LOOP-LOC provides two different types of On-Ground Installation Tools. The type of device included with your cover is based upon the specific On-Ground pool you are covering. Please refer to figures 7 & 8 if you have received our nylon Installation Rod, or figure 9 if you have received our On-Ground Installation Hook.

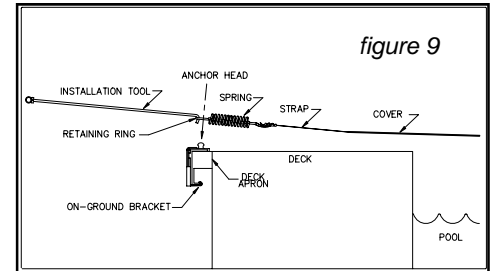
Nylon Installation Rod

- Insert Installation Rod through retaining ring on end of spring (see *Figure 7*).
- Place heel of rod behind anchor head. Pull rod handle away from cover edge until retaining ring on spring slides over anchor head (see *Figure 8*).
- Rotate rod until heel is free from anchor head. Cover is now secured to bracket.



On-Ground Installation Hooks

- Place hook of the Installation device over spring as shown in *Figure 9*.
- Pull back and lower the springs retaining ring onto the brackets.
- Cover is now secured to bracket.



STEP 7 ATTACH REMAINING BRACKETS AND INSTALL REMAINING SPRINGS ONTO THE BRACKETS.

- Repeat steps 4 through 6 to install remaining brackets to deck apron, and springs to brackets.

STEP 8 CONDUCT A FINAL CHECK after all springs are installed.

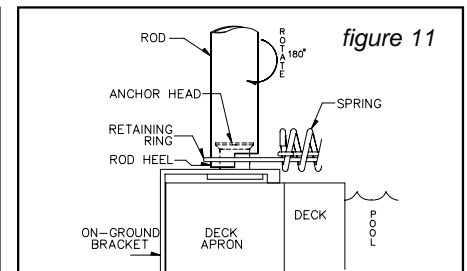
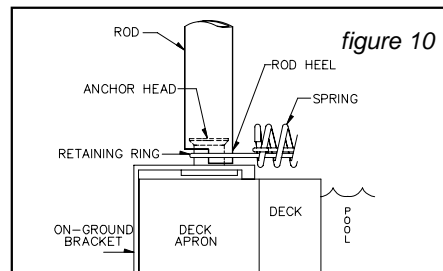
Adjust all springs so that tension is equal on all parts of the cover, making certain that the cover's edge lies in a straight line on all sides. All springs should be compressed approximately 50%.

IMPORTANT: TO AVOID INJURY, BRACKETS MUST BE SECURED TO YOUR DECK APRON BEFORE ATTACHING THE SPRINGS TO THE BRACKETS!

To Remove Springs From Brackets:

Kayak Pool Owners

- Insert Installation Rod over anchor head with heel of rod facing cover (*figure 10*).
- Pressing downward, rotate rod 180 degrees so that heel of rod is between anchor head and retaining ring (*figure 11*).
- Tilt rod slightly toward cover until retaining ring slides off of anchor head. Cover is now released from bracket.



All Other Brands

- Place the hook end of the Installation Hook onto the spring retaining ring at the bracket's anchor head.
- In one continuous movement, pull back on the Installation Hook with increasing pressure so as to free the spring retaining ring and lift it from the bracket.
- Carefully and slowly release the pressure from the spring.

IMPORTANT CARE INFORMATION

COVER TENSION: Proper cover tension is crucial to maintaining your warranty and the life of your cover. It is not uncommon that after 2 to 3 weeks the cover will stretch and the straps will need to be retightened to ensure proper tension. If you can remove the springs from the brackets by hand, **THE STRAPS ARE TOO LOOSE... which will void your warranty!** The adjustable springs on your cover should be compressed about 50% at all times. Adjust as needed to maintain this 50% compression.

WATER LEVEL: In all areas - particularly snow areas - water level must be maintained high enough to support the cover and prevent excess wear. **DO NOT ALLOW WATER LEVEL TO FALL MORE THAN 14" BELOW THE TOP OF THE POOL THROUGHOUT THE WINTER OR THE WARRANTY WILL BE VOID.**

ADDING CHEMICALS: For pool water to remain clear, it must have the proper level of sanitizer and algaecide **AT ALL TIMES** - regardless of whether the pool is in use. When closing your pool in the fall, use a winterizing chemical kit. The kit should include winterizing algaecide and floating canister(s) appropriate for the water capacity of your pool. Tie the canister(s) so it floats near the center of the pool. When winterized properly, spring clean up will be kept to a minimum. One month before opening your pool, **or when temperatures of 60° or higher remain constant**, additional algaecide should be added to the pool. Periodic additions of sanitizer may be needed to maintain proper water chemistry and reduce algae growth.